

Alaska Department of Fish and Game

Habitat Section
Southeast Region



113-59-10070 Tributary 1

ADDITION

Water body name:

Quad: Sitka C-4

Upper Reach Latitude: 57.553817 **Longitude:** -134.998815

Lower Reach Latitude: 57.551678 **Longitude:** -135.008784

Survey date: 8/9/2023

Species & Lifestage:

Survey crew: DK, NJ

Findings: We surveyed this uncataloged stream using baited minnow traps and GPS and captured juvenile coho salmon and threespine stickleback. This stream extends up from the main channel of 113-59-10070 into a grassy muskeg where it then branches into multiple tributaries, only one of which was trapped due to time constraints. Water levels were low but high enough to set minnow traps near the road (Table 1; Figures 1, 2).

Recommendations: Add this uncataloged stream to the anadromous waters catalog for rearing coho salmon up to waypoint 628 (Figure 3).

Nomination: Pending

Table 1.—113-59-10070 tributary 1 survey data.

Waypoint	Latitude	Longitude	Notes	Stream Width ft	Stream Substrate	Habitat Features	Gradient %	Sample Effort	Sample Results
628	57.553883	-134.999283	Low water in a grassy channel. Some SB and one CO escaped trap before photo. No clear crossing point at road.	8-10	Fine Organic			MT	2 CO 24 SB



Figure 1. Downstream at waypoint 628.



Figure 2. Juvenile coho salmon caught at waypoint 628.

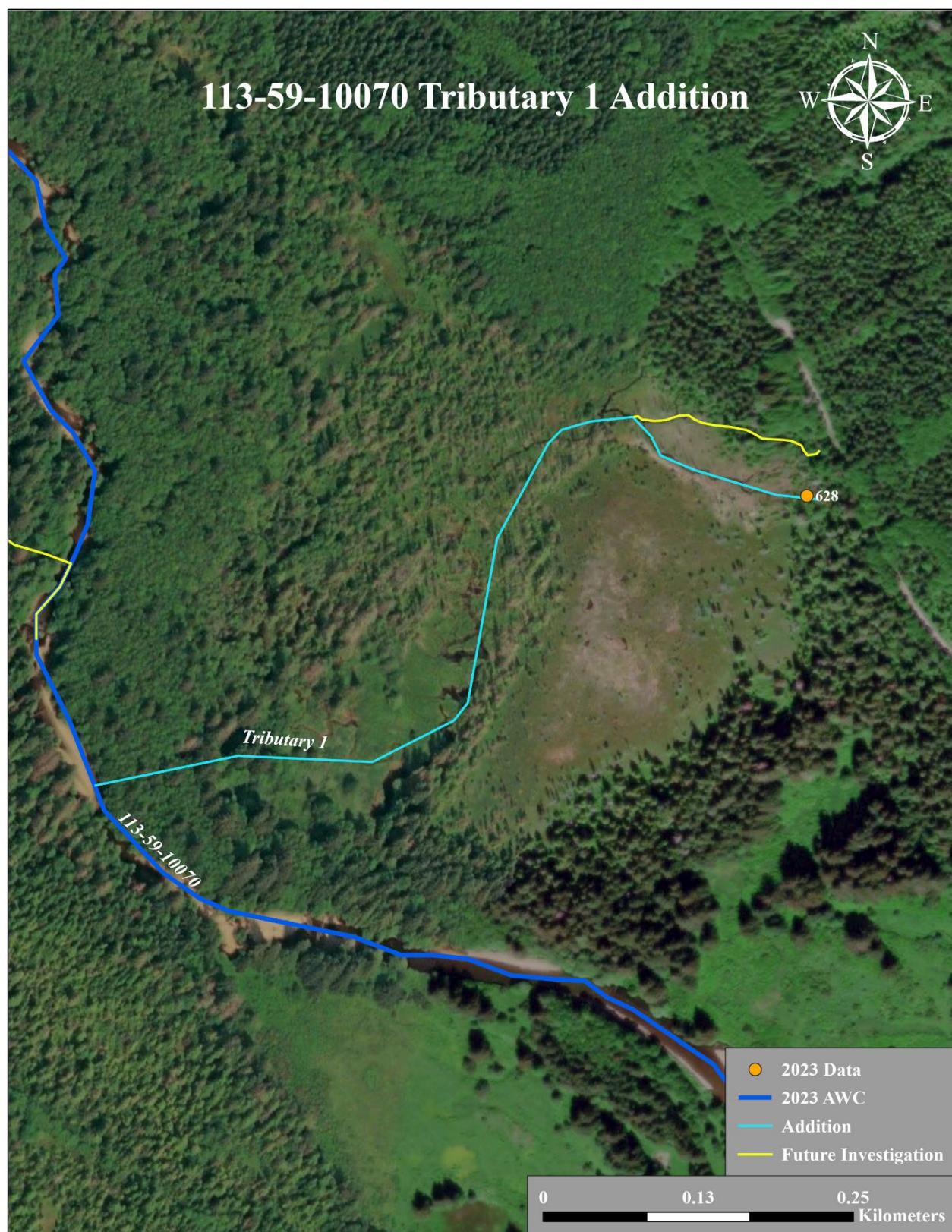


Figure 3. 113-59-10070 tributary 1 addition map.